

Filter

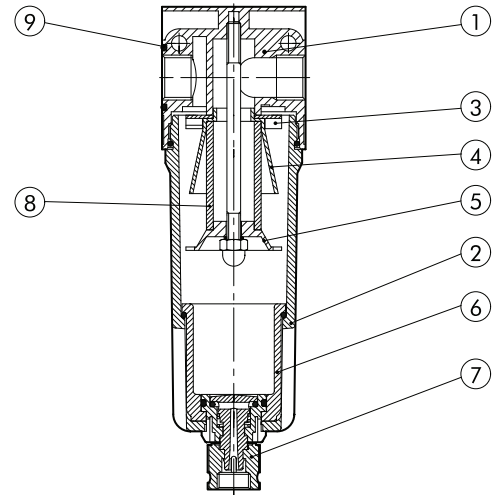
TO MSN 01

Screwed BSPP, Metal Body, Aluminium Bowl, NBR Gaskets & Seals, Bronze Filter



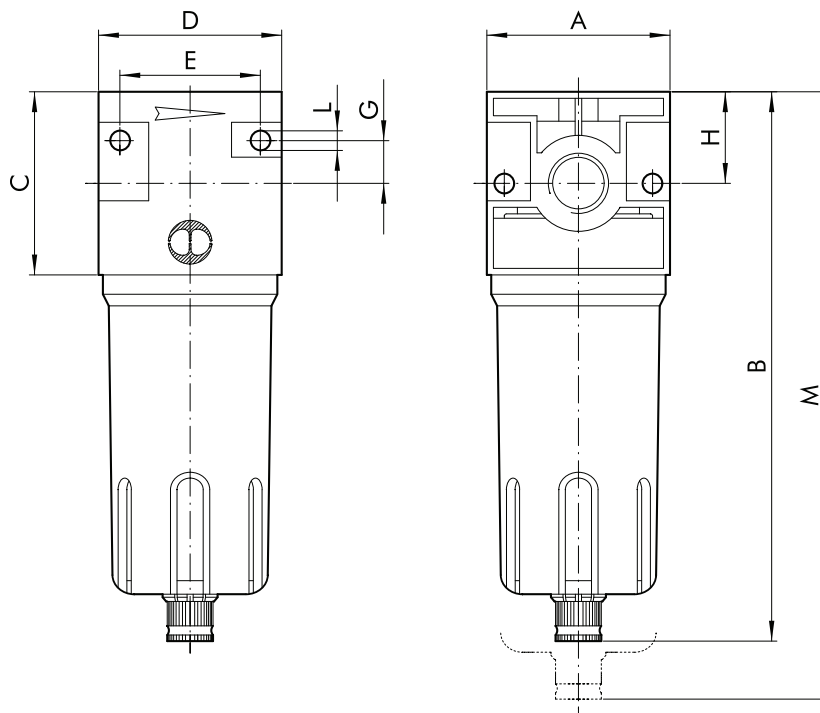
Pressure / Temperature Specifications	
Pressure	PN18
Temperature	-10°C to 50°C

Material Specifications	
1. Body	Zamak
2. Bowl	Aluminium
3. Centrifuge	Technopolymer
4. Baffle Plug	Technopolymer
5. Screen	Technopolymer
6. Bowl	Clear Technopolymer
7. Drain	RMSA </td
8. Cartridge	HDPR Bronze (1/4" to 1/2") Sintered Bronze (3/4" & 1")
9. Gaskets	NBR



Filter Mesh	
1/4" to 1"	20µm

Dimensions										
Size	A	B	C	D	E	G	H	L	M	Kg
1/4"	42	142	42	42	32	10	21	M4	185	0.4
3/8"	60	180	60	60	46	14	30	M4	230	0.9
1/2"	60	180	60	60	46	14	30	M4	230	0.9
3/4"	80	235	80	80	66	22	40	M6	325	1.2
1"	80	235	80	80	66	22	40	M6	325	1.2



Continues on Page 2

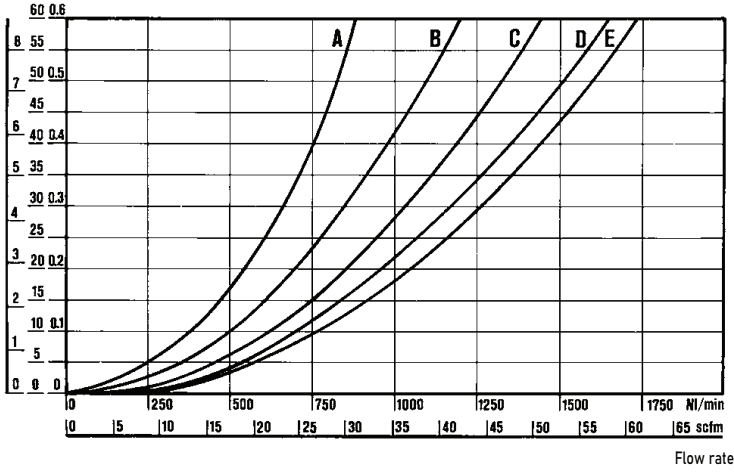
Filter

MSN 01

1/4

$\Delta P = (P_m - P_v)$

psi kPa bar

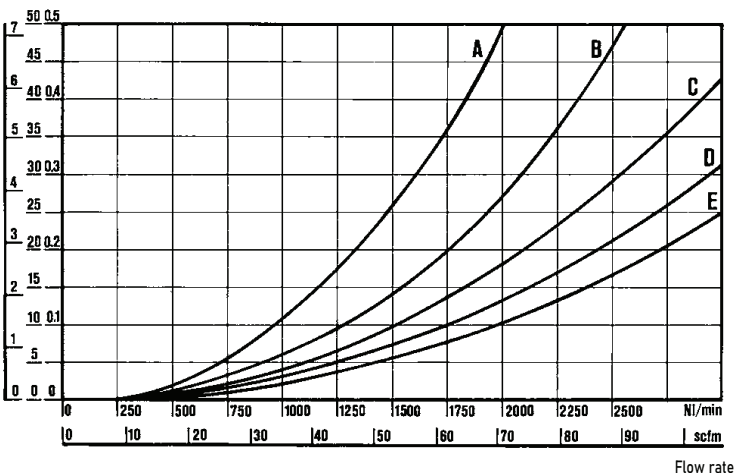


Flow rate

3/8 & 1/2

$\Delta P = (P_m - P_v)$

psi kPa bar

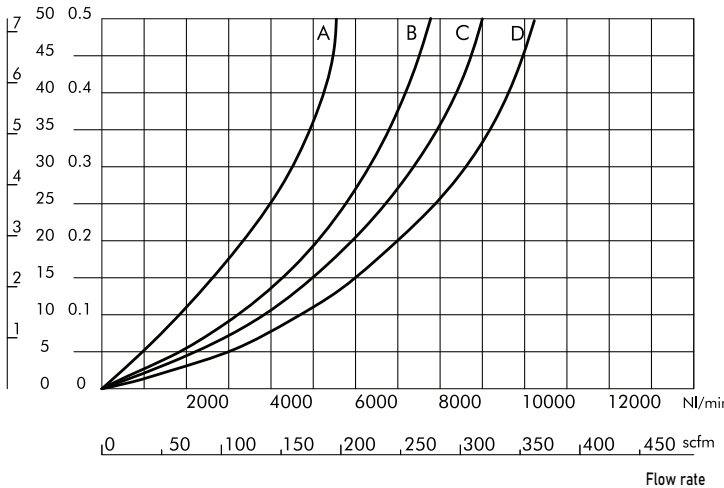


Flow rate

3/4 & 1'

$\Delta P = (P_m - P_v)$

psi kPa bar



Flow rate

(A) = 2 bar
(B) = 4 bar
(C) = 6 bar

(D) = 8 bar
(E) = 10 bar