

# Lugged & Tapped Butterfly Valve - EPDM Liner - PN16

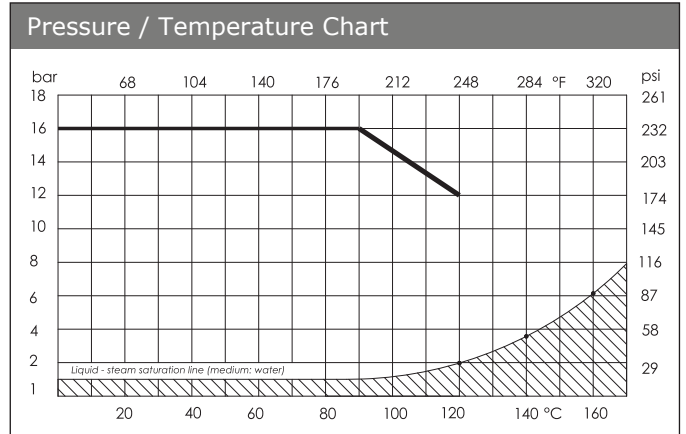
LV 9902

ISO 5211 for Direct Mount, Epoxy Coated Cast Iron Body, Nickel Plated Ductile Iron Disc, EPDM Liner, Locking Lever Operation 2" to 10", Gearbox Operation 12", Complies with 97/23/CE (PED) Directive CE 1115



Pressure / Temperature Specifications	
Pressure	PN16
Temperature	-10°C to 120°C (130°C Peak)

Material Specifications	
1. Body	EN GJL 250 Cast Iron
2. Disc	EN GJS 400 - 15 Nickel Plated Ductile Iron
3. Stem	AISI 420 Stainless Steel
4. Liner	EPDM
5. Bushing	PTFE
6. Washer	Galvanised Carbon Steel
7. Circlip	Spring Steel
8. O-ring	Viton
9. Lever	Steel
10. Bolts	AISI 201 Stainless Steel



Note: Not suitable when temperature and pressure are below the liquid-steam saturation line (hatched area)

Operating Torque (Nm, without safety)				
Size	3 Bar	6 Bar	10 Bar	16 Bar
2"	11.3	12.0	13.0	13.0
2½"	17.0	18.0	20.0	21.0
3"	23.0	25.0	26.0	28.0
4"	33.0	36.0	40.0	44.0
5"	48.0	54.0	61.0	68.0
6"	68.0	78.0	88.0	99.0
8"	120.0	134.0	148.0	162.0
10"	189.0	212.0	234.0	257.0
12"	290.0	316.0	342.0	367.0

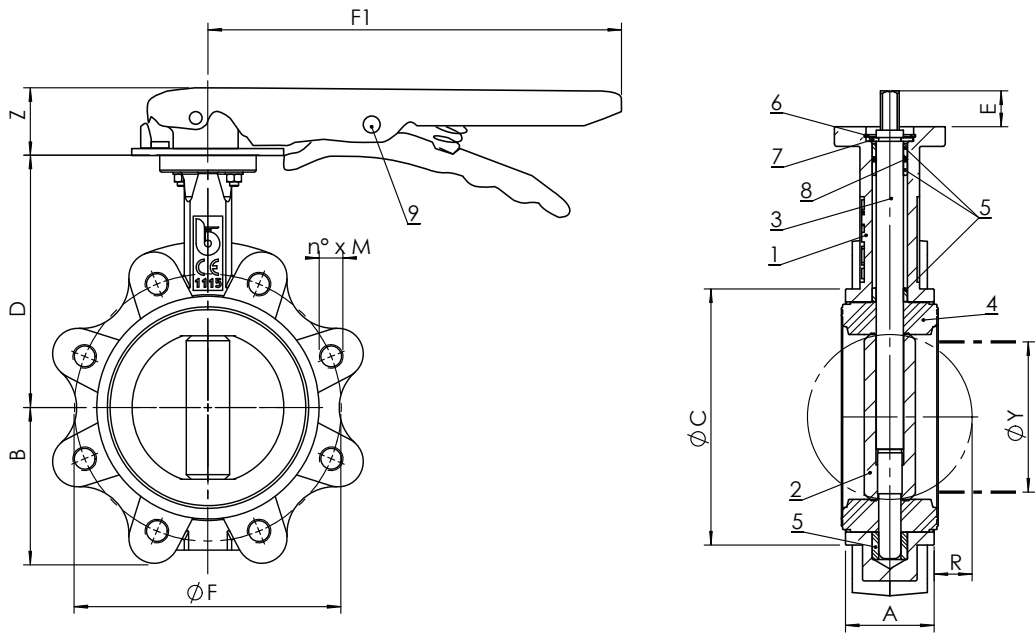
Weight		
Size	with Lever	with Gearbox
2"	3.2	7.2
2½"	4.1	8.1
3"	5.4	9.2
4"	6.7	10.5
5"	9.6	12.9
6"	10.8	14.1
8"	21.1	28.4
10"	32.7	42.0
12"	-	50.4

KV Chart (mc/h)									
Size	10°	20°	30°	40°	50°	60°	70°	80°	90°
2"	0.05	2.60	6.0	13.0	23.0	38.0	60.0	91.0	99.0
2½"	0.00	3.80	14.0	33.0	53.0	75.0	98.0	108.0	108.0
3"	0.17	7.80	16.0	34.0	60.0	100.0	158.0	237.0	261.0
4"	0.26	15.0	31.0	67.0	120.0	199.0	314.0	471.0	518.0
5"	0.43	25.0	53.0	115.0	205.0	339.0	535.0	803.0	883.0
6"	0.69	39.0	82.0	177.0	316.0	522.0	827.0	1241.0	1364.0
8"	2.60	52.0	142.0	250.0	450.0	713.0	1122.0	1723.0	2716.0
10"	2.60	130.0	276.0	599.0	1068.0	1768.0	2798.0	4196.0	4611.0
12"	3.5	202.0	427.0	926.0	1650.0	2730.0	4322.0	6483.0	7124.0

Continues on Page 2

# Lugged & Tapped Butterfly Valve - EPDM Liner - PN16

LV 9902

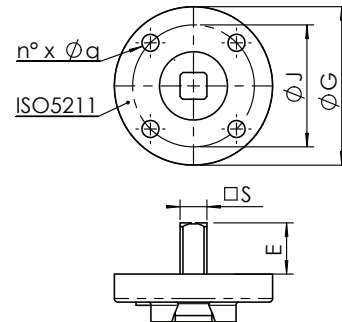


## Dimensions

Size	A	ØC	D	B	F1	Z	R	ØY	F	n x M
2"	43	89	126	62	193	27	5	31	125	4 x M16
2½"	46	102	136	69	193	27	9	45	145	4 x M16
3"	46	118	150	90	216	27	17	65	160	8 x M16
4"	52	150	170	106	216	27	26	90	180	8 x M16
5"	56	174	180	119	250	27	34	110	210	8 x M16
6"	56	205	200	131	250	27	50	146	240	8 x M16
8"	60	260	230	166	350	31	71	194	295	12 x M20
10"	68	318	266	202	375	30	91	241	355	12 x M24
12"	78	376	292	235	-	-	112	291	410	12 x M24

## Dimensions

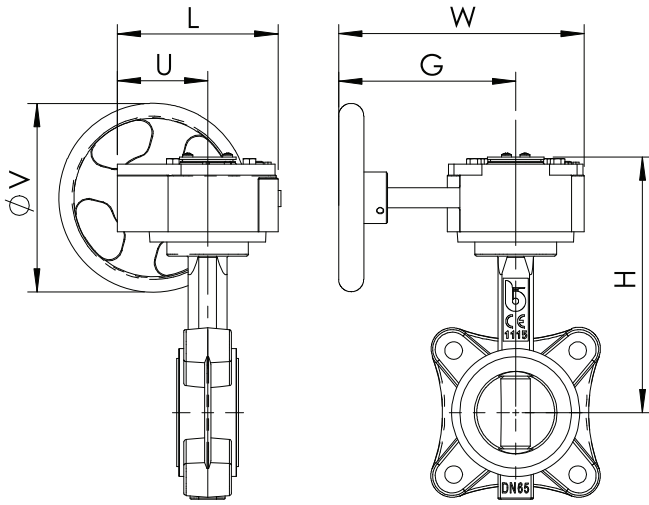
Size	ISO	G	J	n x q	S	E
2"	F05	65	50	4 x 7	9	21
2½"	F05	65	50	4 x 7	9	21
3"	F05	65	50	4 x 7	11	21
4"	F05	65	50	4 x 7	11	21
5"	F07	90	70	4 x 9	14	27
6"	F07	90	70	4 x 9	14	27
8"	F10	125	102	4 x 11	17	27
10"	F12	150	125	4 x 13	27	27
12"	F12	150	125	4 x 13	27	27



Continues on Page 3

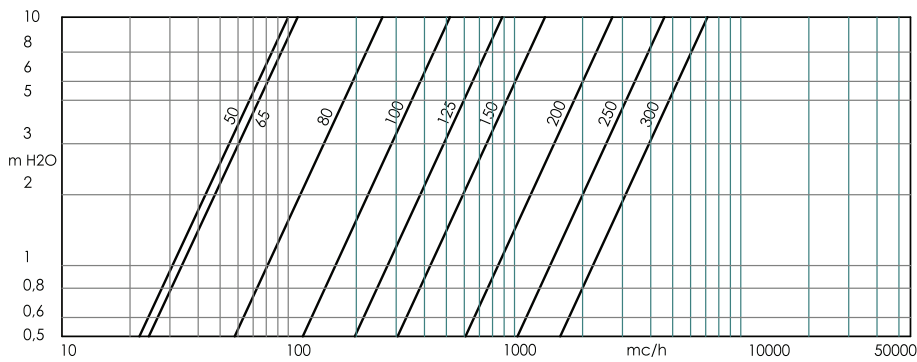
# Lugged & Tapped Butterfly Valve - EPDM Liner - PN16

LV 9902



Dimensions						
Size	L	U	H	W	F	V
2"	130	77	188	225	170	150
2½"	130	77	198	225	170	150
3"	130	77	212	225	170	150
4"	130	77	232	225	170	150
5"	130	77	242	225	170	150
6"	130	77	262	225	170	150
8"	180	104	308	338	260	300
10"	205	124	346	345	260	300
12"	205	124	372	345	260	300

Head Loss (1m H<sub>2</sub>O = 0.098 Bar, Disc Fully Open)



Flow Rate / Opening Position Chart

