

# Stainless Steel Ball Valve - Flanged PN16

1/2" to 4"



LV 6350

Flanged PN16, Full Bore, CF8M Stainless Steel Body, Ball & Stem, PTFE Seats & Seals, Anti-blowout Stem, Anti-static Device, Firesafe Design, ATEX Approved

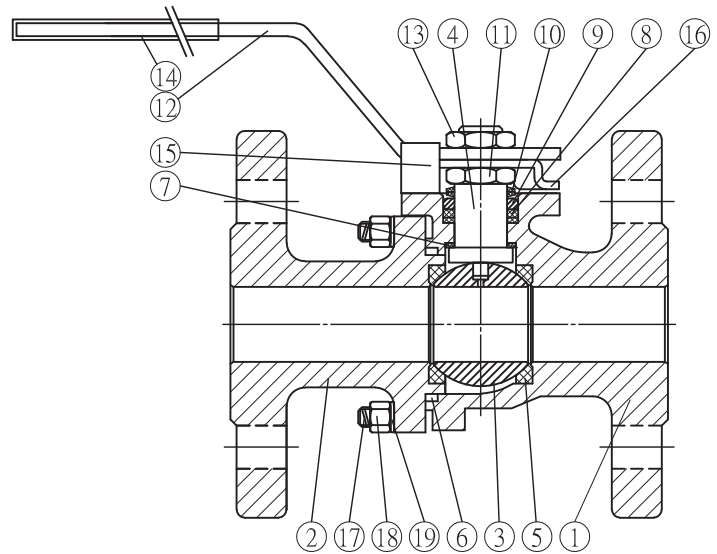


## Pressure / Temperature Specifications

Pressure	PN16
Temperature	-10°C to 180°C

## Material Specifications (1/2" to 4")

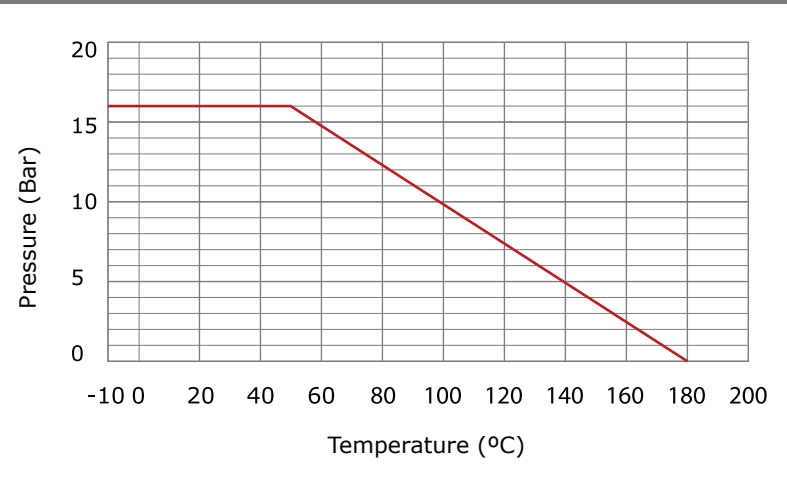
1. Body	1.4408 Stainless Steel
2. End Cap	1.4408 Stainless Steel
3. Ball	CF8M Stainless Steel
4. Stem	316 Stainless Steel
5. Seat	PTFE
6. Body Seal	PTFE
7. Thrust Washer	PTFE
8. Stem Seal	PTFE
9. Gland Ring	304 Stainless Steel
10. Disc Spring	301 Stainless Steel
11. Stem Nut	304 Stainless Steel
12. Handle	400 Series Stainless Steel
13. Handle Nut	304 Stainless Steel
14. Handle Sleeve	Plastic
15. Stop Pin	304 Stainless Steel
16. Stopper	304 Stainless Steel
17. Body Bolt	304 Stainless Steel
18. Body Nut	304 Stainless Steel
19. Spring Washer	304 Stainless Steel



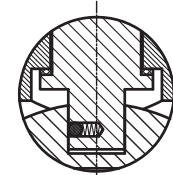
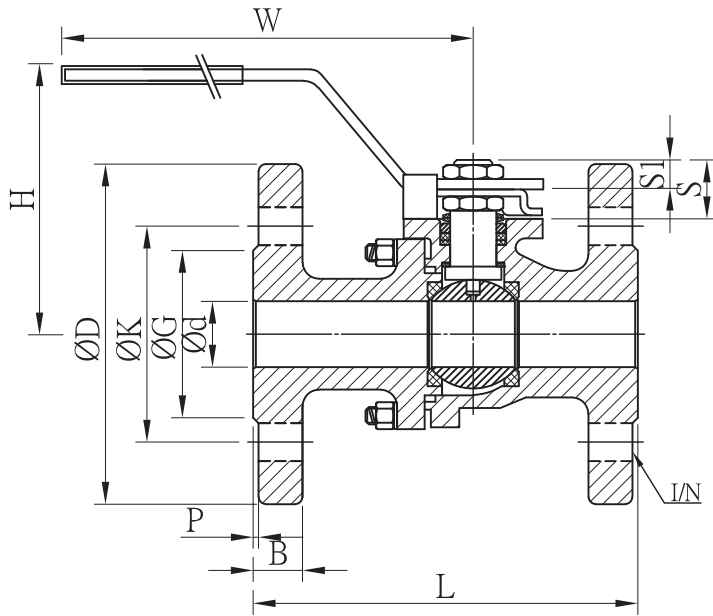
## Torque Figures

Size	Nm
1/2"	5.5
3/4"	8.0
1"	11.0
1 1/4"	15.0
1 1/2"	20.0
2"	29.0
2 1/2"	50.0
3"	77.0
4"	110.0
5"	150.0
6"	270.0
8"	600.0

## Pressure / Temperature Chart



Continues on Page 2



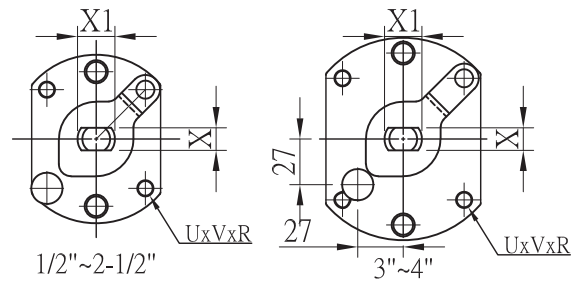
Anti-static device

Dimensions (1/2" to 5")

Size	Ød	L	ØD	ØK	ØG	B	I/N	P	S	S1	H	W	Kg
1/2"	15	115	95	65	45	14	4 x 14	2.0	19.8	6.3	94	138	2.2
3/4"	20	120	105	75	58	16	4 x 14	2.0	21	7.5	97	138	2.6
1"	25	125	115	85	68	16	4 x 14	2.0	24.3	9.1	115	178	3.65
1 1/4"	32	130	140	100	78	16	4 x 18	2.0	25.8	10.8	119	178	6.12
1 1/2"	38	140	150	110	88	16	4 x 18	3.0	36	17.5	141	195	6.85
2"	50	150	165	125	102	18	4 x 18	3.0	37.2	18.7	149	195	9.65
2 1/2"	65	170	185	145	122	18	4 x 18	3.0	37.5	19	164	220	15.2
3"	80	180	200	160	138	20	8 x 18	3.0	47	26.1	172	328	19.6
4"	100	190	220	180	158	20	8 x 18	3.0	44.3	23.4	187	328	27.3
5"	125	325	250	210	188	22	8 x 18	3.0	30	-	200	525	40.7

Dimensions (1/2" to 5")

Size	U x V x R	X	X1
1/2"	4-42 x M5 x P0.8	8.6	M14 x 2.0
3/4"	4-42 x M5 x P0.8	8.6	M14 x 2.0
1"	4-50 x M6 x P1.0	10	M16 x 2.0
1 1/4"	4-50 x M6 x P1.0	10	M16 x 2.0
1 1/2"	4-70 x M8 x P1.25	12	M20 x 2.5
2"	4-70 x M8 x P1.25	12	M20 x 2.5
2 1/2"	4-70 x M8 x P1.25	12	M20 x 2.5
3"	4-102 x M10 x P1.5	16	M27 x 3.0
4"	4-102 x M10 x P1.5	16	M27 x 3.0
5"	ØA 102 ØB 125	27	M32 x 2.0



Continues on Page 3

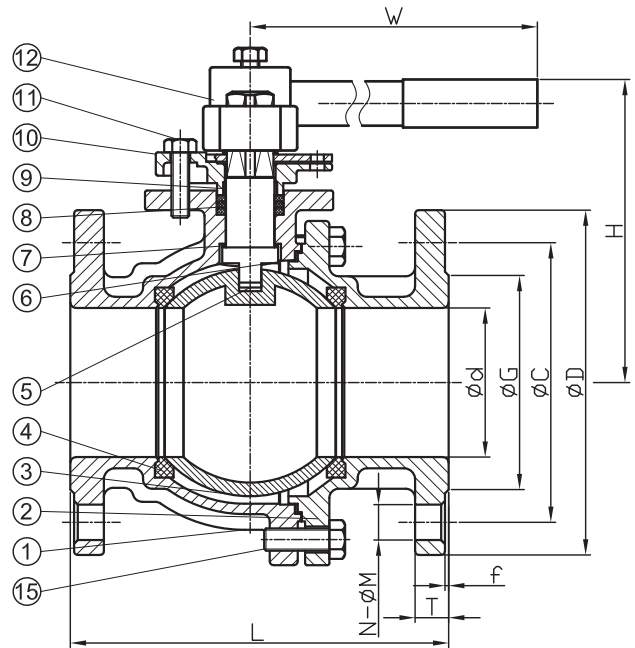
# Stainless Steel Ball Valve - Flanged PN16



LV 6350

## Material Specifications (6")

1. Body	1.4408 Stainless Steel
2. End Cap	1.4408 Stainless Steel
3. Ball	1.4408 Stainless Steel
4. Seat	PTFE
5. Stem	316 Stainless Steel
6. Gasket	PTFE
7. Thrust Washer	TFM 4215
8. Gland Packing	PTFE
9. Stem Packing	PTFE
10. Gland	1.4308 Stainless Steel
11. Gland Bolt	304 Stainless Steel
12. Handle	FCD
13. Stopper	304 Stainless Steel
14. Snap Ring	304 Stainless Steel
15. Bolt	304 Stainless Steel

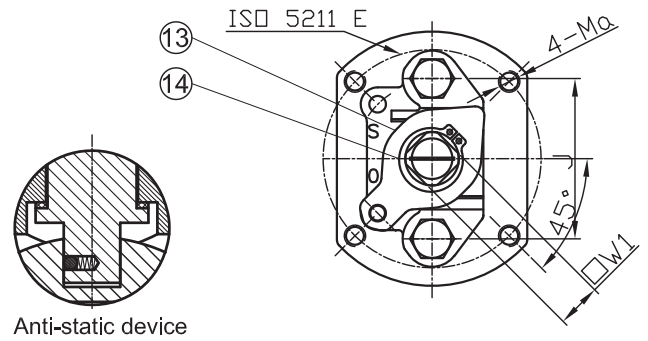


## Dimensions (6")

Size	Ød	ØD	ØC	ØG	f	T	N-ØM	L	H	Kg
6"	150	285	240	212	3	22	8 x 22	350	247	53.0

## Dimensions (6")

Size	W	W1	ISO	E	Ma
6"	750	24	F12	125	M12



Anti-static device

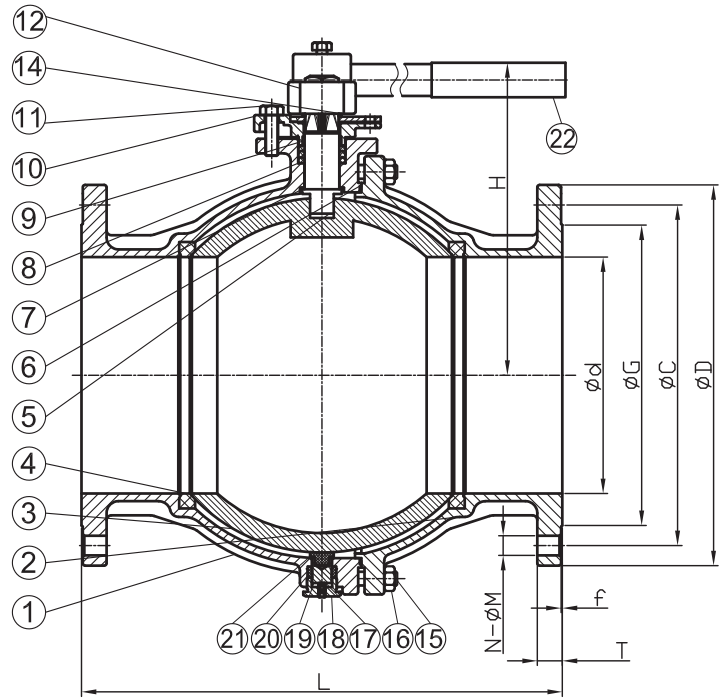
Continues on Page 4

# Stainless Steel Ball Valve - Flanged PN16

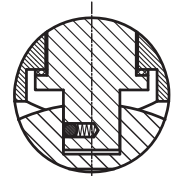


LV 6350

Material Specifications (8")	
1. Body	1.4408 Stainless Steel
2. End Cap	1.4408 Stainless Steel
3. Ball	1.4408 Stainless Steel
4. Seat	PTFE
5. Stem	316 Stainless Steel
6. Gasket	PTFE
7. Thrust Washer	PTFE + 25% Carbon
8. Packing	PTFE
9. Stem Packing	PTFE
10. Gland	CF8 Stainless Steel
11. Gland Bolt	304 Stainless Steel
12. Handle	1.0619 Stainless Steel
13. Stopper	304 Stainless Steel
14. Snap Ring	301 Stainless Steel
15. Stud	304 Stainless Steel
16. Nut	304 Stainless Steel
17. Tuning Screw	304 Stainless Steel
18. Support Nut	304 Stainless Steel
19. Support Pin	316 Stainless Steel
20. Pin Packing	Graphite
21. Pin Seat	PTFE
22. Handle Cover	Plastic



Dimensions (8")										
Size	Ød	ØD	ØC	ØG	f	T	N-ØM	L	H	Kg
8"	200	340	295	268	3	24	12 x 22	400	305	80.0



Anti-static device

Dimensions (8")					
Size	W	W1	ISO	E	Ma
8"	1000	32	F12	125	M12

