

Ductile Iron Pressure Reducing Valve

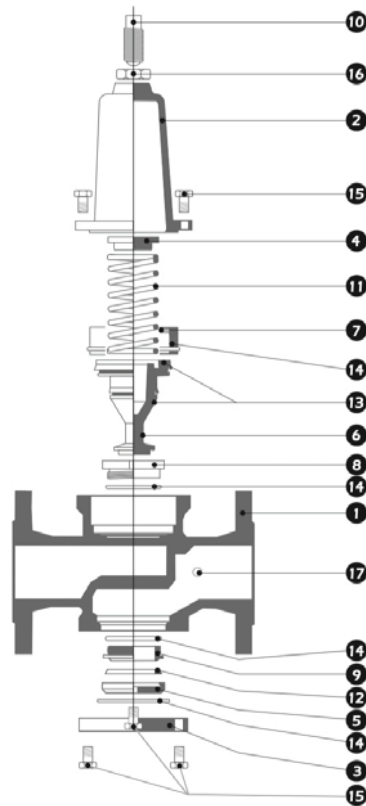
LV 1023

Flanged PN16, Epoxy Coated GS400 Ductile Iron Body, NBR Seal, Steel Springs

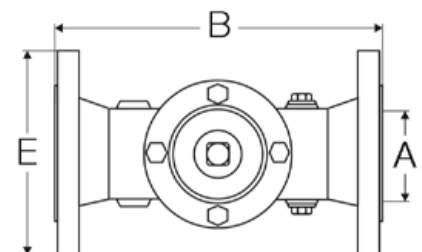
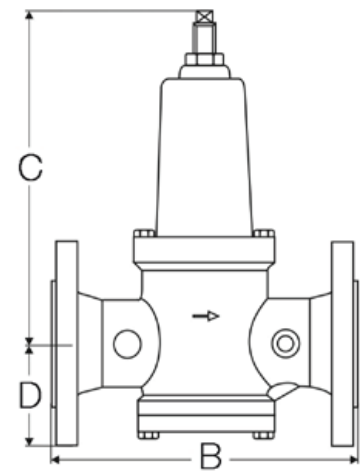


Pressure / Temperature Specifications	
Maximum Inlet Pressure	16 Bar
Outlet Pressure	1.5 to 6 Bar (Standard)
	2 to 8 Bar
	4 to 12 Bar
Temperature	0°C to 40°C

Material Specifications	
1. Body	EN GJS 400 Ductile Iron
2. Cover	EN GJS 400 Ductile Iron
3. Flange	Ductile Iron
4. Spring Disc	Galvanised Carbon Steel
5. Seal Support	CW612N Brass
6. Closing System	CW612N Brass
7. Sleeve	Bronze
8. Ring	Bronze
9. Seat	Bronze
10. Setting Screw	Galvanised Steel
11. Spring	Steel
12. Brace Washer	NBR
13. Lip Seal	NBR
14. Seal	NBR
15. Cover Screw	Stainless Steel
16. Nut	Galvanised Steel
17. Plug	CW614N Brass



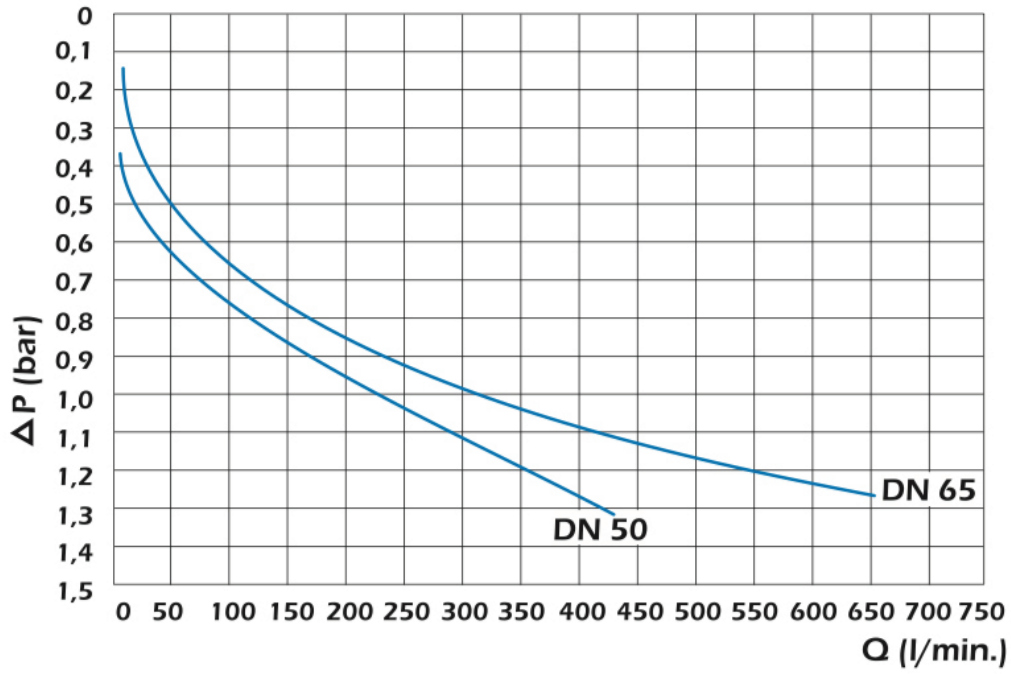
Dimensions						
Size	B	C	D	E	Gauge Port	Kg
2"	230	301	83	165	1/4"	15.0
2 1/2"	290	354	92.5	185	1/4"	22.0
3"	310	390	100	200	1/4"	27.0
4"	350	492	121	235	1/4"	37.0
5"	400	560	152	250	1/4"	77.0
6"	450	670	169	285	1/4"	98.0
8"	550	1050	234	340	1/4"	191.0



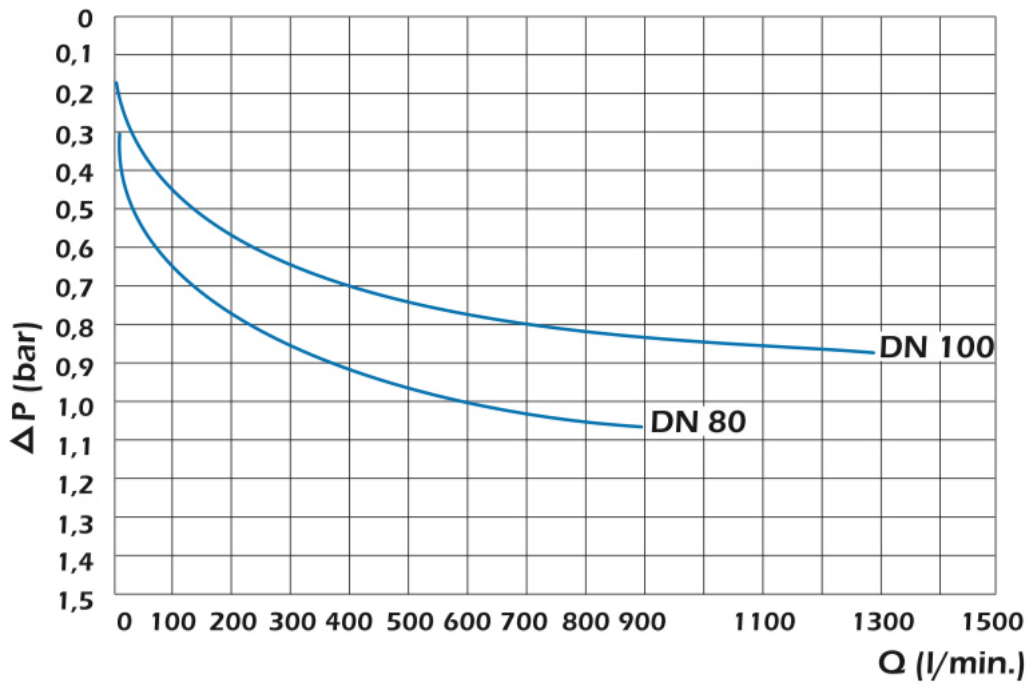
Ductile Iron Pressure Reducing Valve

LV 1023

Headloss Chart - 2" & 2½"



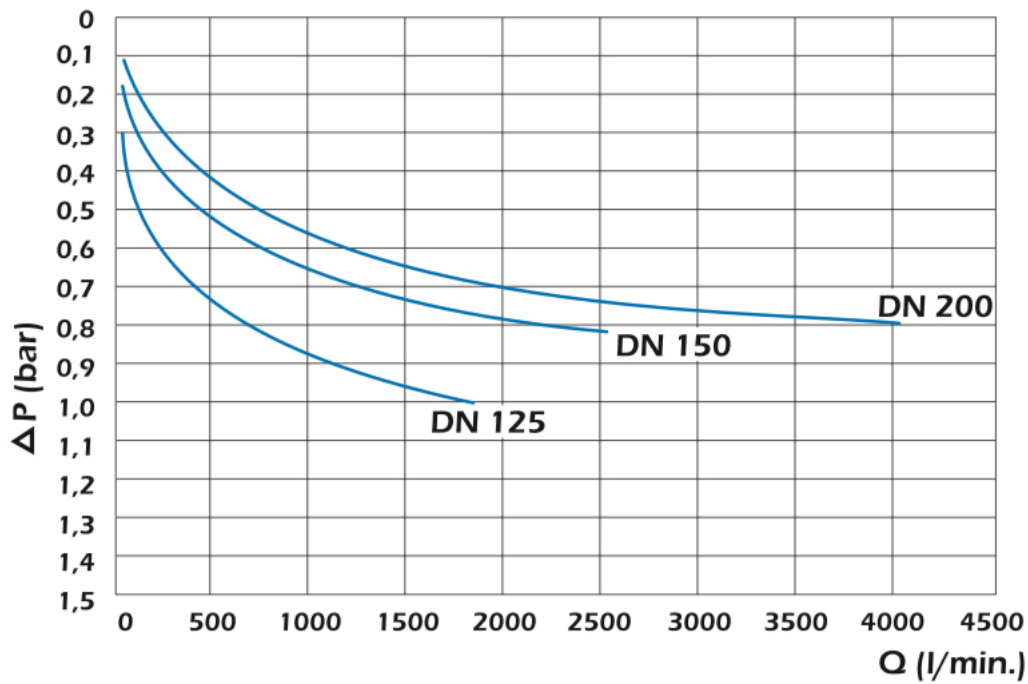
Headloss Chart - 3" & 4"



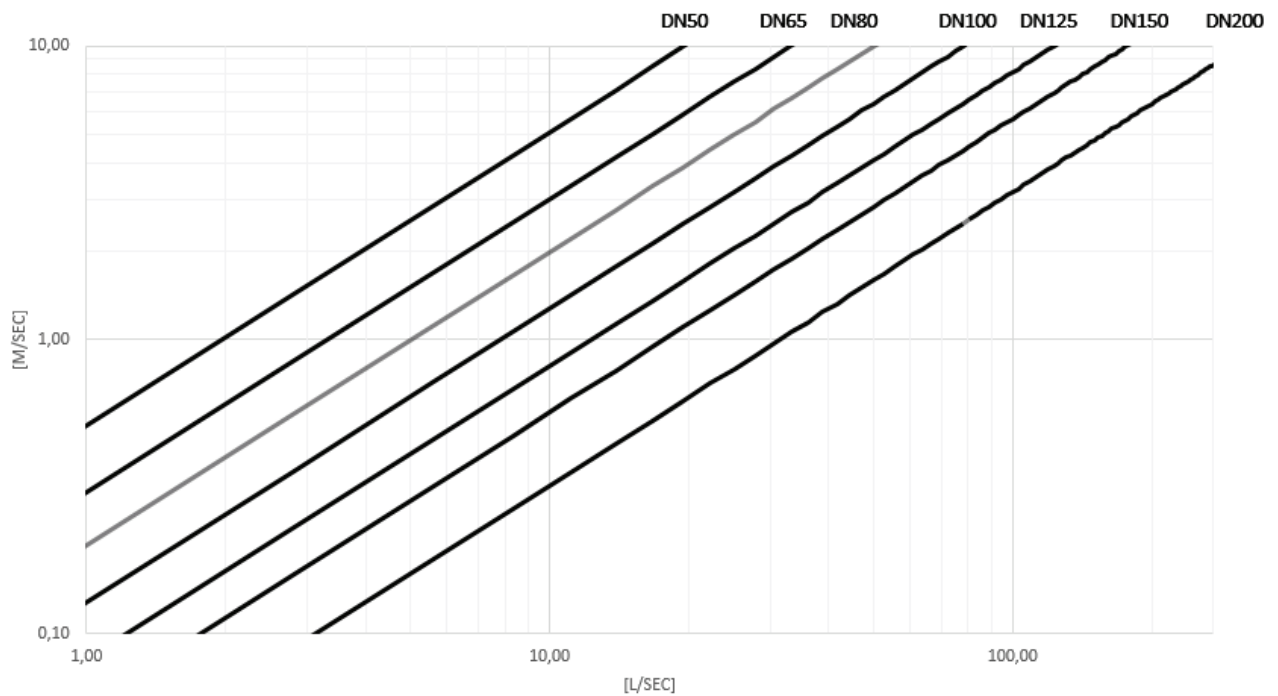
Ductile Iron Pressure Reducing Valve

LV 1023

Headloss Chart - 5" to 8"



Flow Sizing Chart



Ductile Iron Pressure Reducing Valve

LV 1023

