

Bronze Globe Valve - Angle Pattern

LV 1040

Flanged PN16, PTFE Seat

Pressure / Temperature Specifications

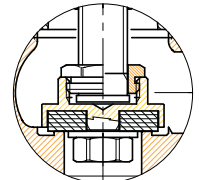
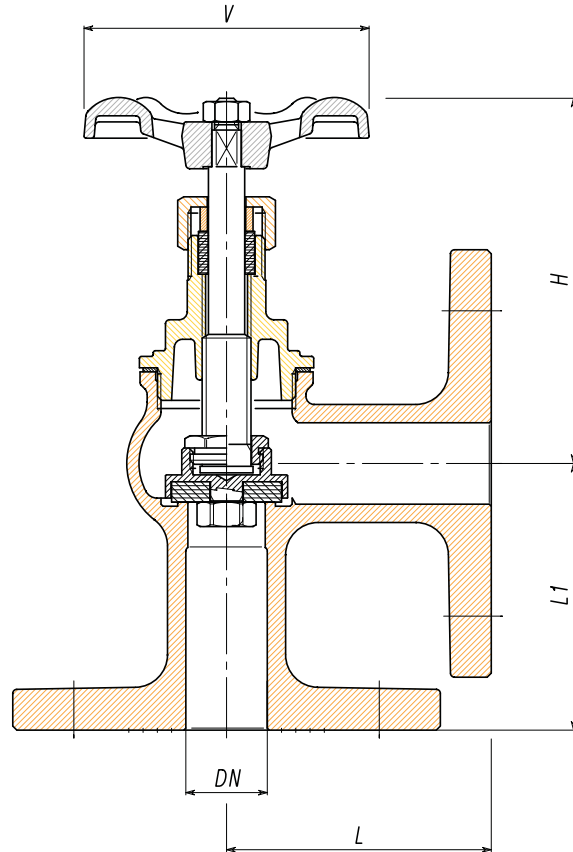
Pressure	PN16
Temperature	-10°C to 180°C

Material Specifications

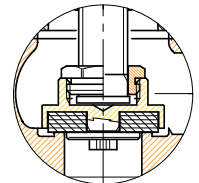
Body	Bronze
Seat	PTFE
Handwheel	Cast Aluminium

Dimensions

DN	L	L1	H	V	Kg
1"	72	72	104	70	3.1
1¼"	85	85	110	80	4.5
1½"	90	90	143	80	5.2
2"	105	105	160	95	7.5
2½"	110	110	187	110	10.7
3"	115	115	225	130	12.8
4"	140	140	220	130	16.0



Dal DN25 al DN50



Dal DN65 al DN100